

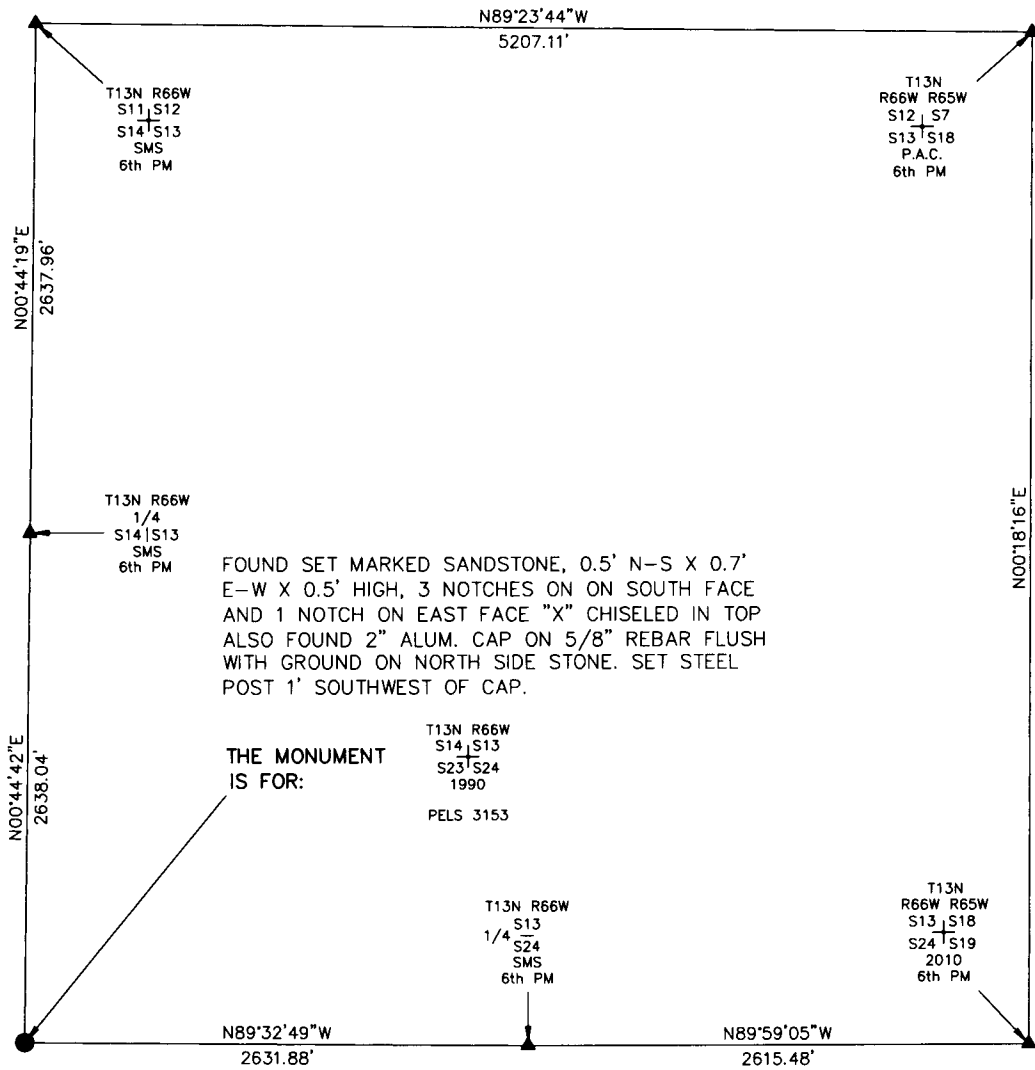
State of Wyoming Corner Record

CORNER PERPETUATION AND FILING ACT.

Regulations of the Board of Registration for Professional Engineers and Land Surveyors.)

Reverse side of this form may be used if more space is needed.

Record of original survey and citation of source of historic information (if corner is lost or obliterated). Description of corner monumentation evidence found and/or monument and accessories established to perpetuate the location of this corner. Sketch of relative location of monument, accessories, and reference points with course and distance to adjacent corner(s) (if determined in this survey). Method and rationale for reestablishment of lost or obliterated corner.



SCALE 1"=1000'
(EXCEPT IN TRIVIAL CASES)
BEARINGS ARE RELATED TO WGS 84 WITH GPS OBSERVATIONS
DRAWN BY: M.D.
P.C. G. STREETER
COUNTY: LARAMIE

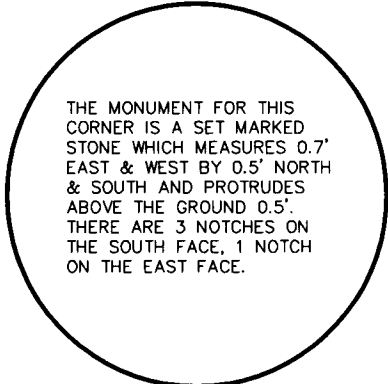
FOUND SET MARKED SANDSTONE, 0.5' N-S X 0.7' E-W X 0.5' HIGH, 3 NOTCHES ON SOUTH FACE AND 1 NOTCH ON EAST FACE "X" CHISELED IN TOP ALSO FOUND 2" ALUM. CAP ON 5/8" REBAR FLUSH WITH GROUND ON NORTH SIDE STONE. SET STEEL POST 1' SOUTHWEST OF CAP.

THE MONUMENT IS FOR:

T13N R66W
S14, S13
S23, S24
1990
PELS 3153

T13N R66W
S13
1/4 S24
SMS
6th PM

T13N R66W R65W
S13, S18
S24, S19
2010
6th PM



THE MONUMENT FOR THIS CORNER IS A SET MARKED STONE WHICH MEASURES 0.7' EAST & WEST BY 0.5' NORTH & SOUTH AND PROTRUDES ABOVE THE GROUND 0.5'. THERE ARE 3 NOTCHES ON THE SOUTH FACE, 1 NOTCH ON THE EAST FACE.

Marking on the Stone

Date of Field Work: 06/02/2010 Office Reference: _____

CROSS INDEX DIAGRAM

A	1	2	3	4	5	6	7	8	9	10	11	12	13	14	15	16	17	18	19	20	21	22	23	24	25	A
B																										B
C		6																								C
D			5																							D
E				4																						E
F					3																					F
G						2																				G
H							1																			H
J																										J
K																										K
L																										L
M																										M
N																										N
O																										O
P																										P
Q																										Q
R																										R
S																										S
T																										T
U																										U
V																										V
W																										W
X																										X
Y																										Y
Z																										Z
	1	2	3	4	5	6	7	8	9	10	11	12	13	14	15	16	17	18	19	20	21	22	23	24	25	

Firm/Agency, Address

UELS, LLC

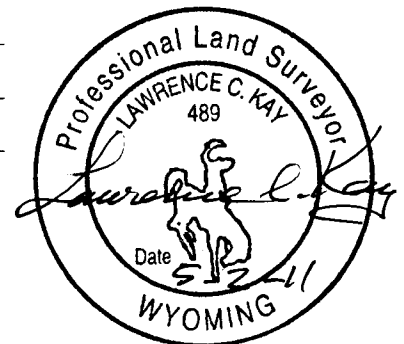
85 South 200 East

Vernal, Utah 84078

Telephone Number: 435-789-1017

This corner record was prepared by me or under my direction and supervision.

SEAL & SIGNATURE



RECORDED 5/06/2011 AT 3:03 PM REC# 568292 JK# 2219 PG# 493
DEBRA K. LATHROP, CLERK OF LARAMIE COUNTY, WY PAGE 1 OF 1